

PIANOMANAGER users manual

Inventronics Inc.

1 800 327 8440

Contents

Menu bar:	5
File.....	5
Open.....	5
SaveAs	5
Print.....	5
eXit.....	5
Recent	6
Export.....	6
Import	6
Edit	6
Font	6
Sort.....	6
UnDelete	6
Math.....	6
Sum	6
Difference.....	7
Average	7
Offset Tuning.....	7
Zero Tuning	7
New Blank Page.....	7
Search.....	7
DOB	7
Off	8
Add To	8
On.....	8
USB.....	8

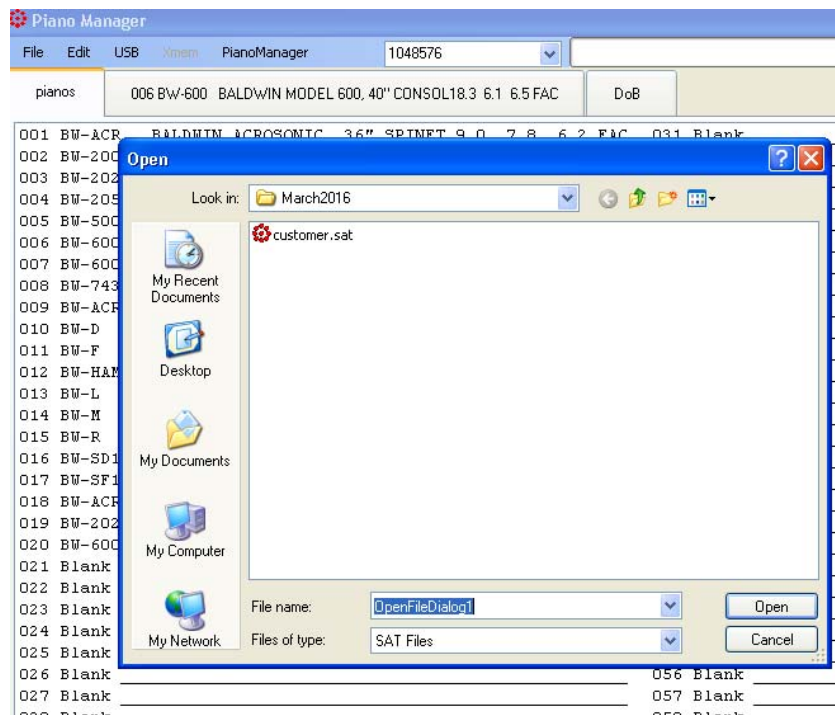
Find Tuner	8
Send	8
Get.....	8
User Settings	8
Cents on Cents	9
Display Note and Octave.....	9
A multiplier.....	9
Auto step delay	9
Lamp On	Error! Bookmark not defined.
Dwell on.	10
Back light intensity.....	10
Sticky shift	10
Step up	Error! Bookmark not defined.
Note change	Error! Bookmark not defined.
Timeout.....	10
Contrast.....	10
Stepping hold-off	10
Cal. offset	10
Xmem	11
Send Library	12
Read	12
PianoManager.....	12
Version	12
Restart Tuner	12
TABS	13
PIANOS	13
Header Edit	13
Copy and move	13
Duplicate	14
Graph	14
Temperament from context menu	17
Double octave beat	18

Load DOB..... 18
Save DOB..... 18
Zero Grid 18
Temperament 19
Load temps..... 19
Save Temps 20
Zero Grid 20
Add 20

Menu bar:

File

Open



Uses Windows file dialog to locate and open a file.

SaveAs

Uses Windows file dialog to save pianos to a directory with a filename.

Print

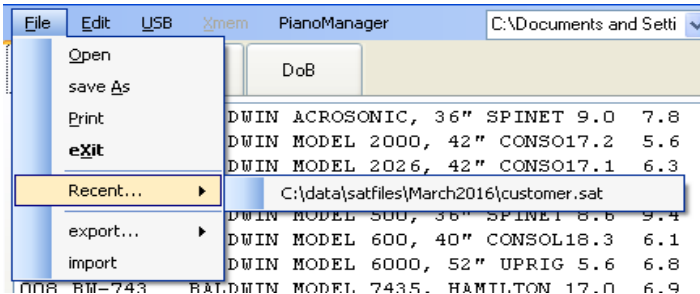
Print the loaded pianos to a printer or file.

eXit

Close the PianoManager program.

Recent

Short cut to files previously opened.



Export

Send to Microsoft Excel or Word.

Import

Get from Microsoft Excel.

Edit

Font

Show a font dialog to set the font used.

Sort

Sort the Pianos alphabetically.

UnDelete

Restore a deleted piano.

Math...

Sum

Add two pianos to a page. Select the two pianos to add the click edit\math\sum.

The result will replace the fist selected tuning with SUM in the header.

Difference

Subtract two piano pages. Select the two pianos, the higher page number is subtracted from the lower page. The result replaces the lower page with the difference.

Average

Offset Tuning

Zero Tuning

Sets selected pages to zero cents.

New Blank Page

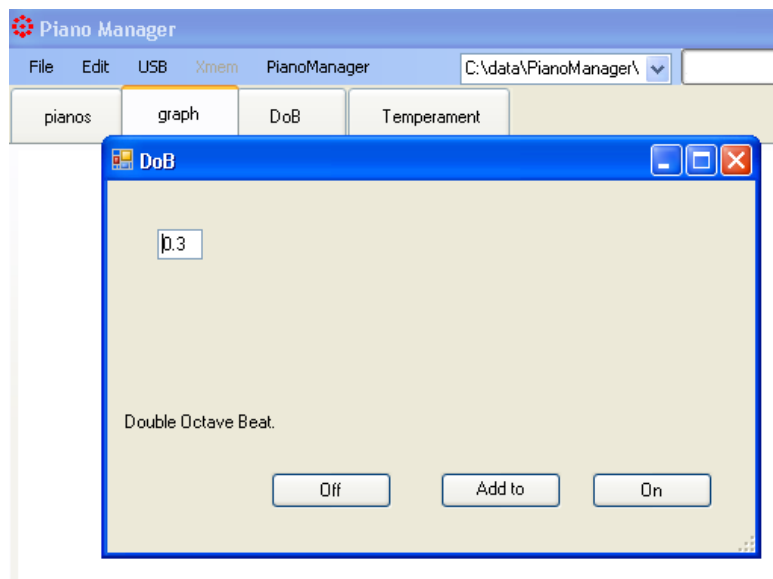
Place a blank piano page at the selected page or to the end of the list.

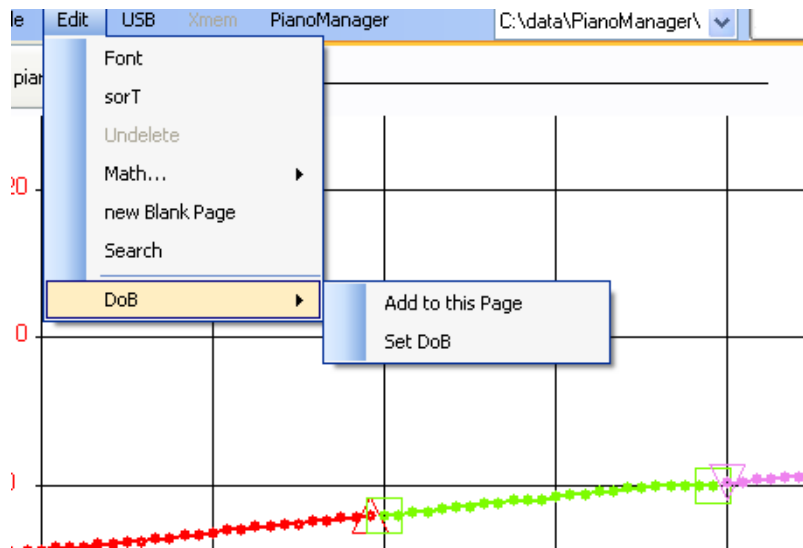
Search

Enter text to look for.

DOB

Set a double octave beat.





Off

Set no DOB

Add To

When a DOB is ready and a tuning selected then add it to the page.

On

The DOB shows in the graph for a preview. When the DOB is correct, add it to the page.

USB

Find Tuner

Test to detect the presence of a tuner.

Send

Send the loaded pianos to an Accu-Tuner4.

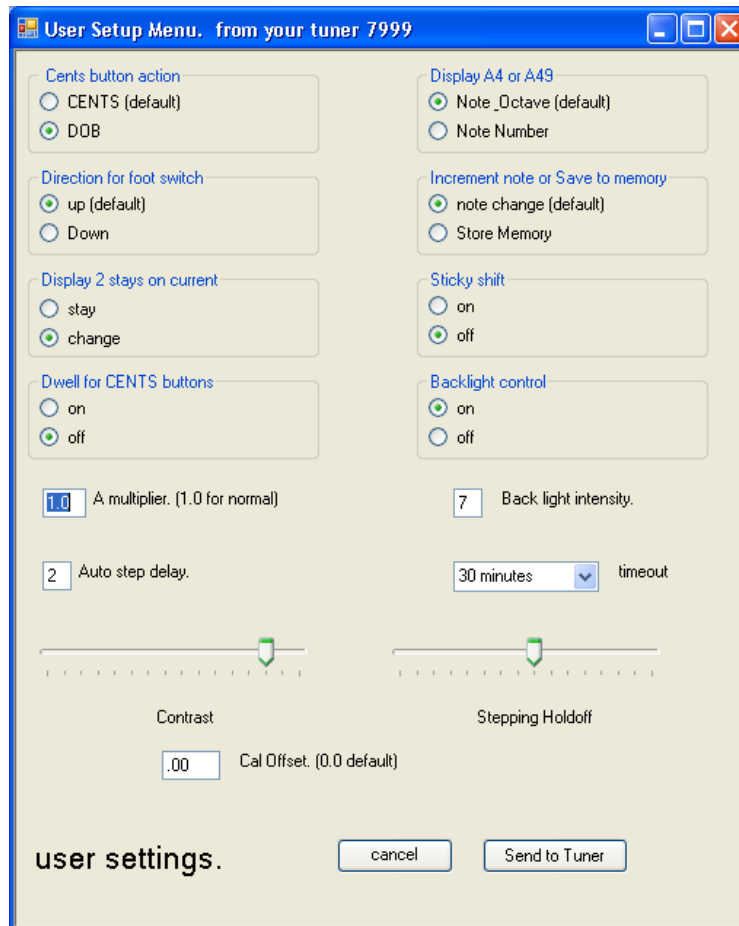
Get

Read the Accu-Tuner4s memory to the PianoManager.

User Settings

Interface to the Accu-Tuner4 user menu settings.

When the properties are set click Send-to-Tuner to send them to the Accu-Tuner4.



Cents button action

The non-shift function of the Cents buttons will adjust Cents. Select DOB and the cents buttons change the DOB setting. When in the memory mode this can be swapped by holding both cents up and down buttons.

Display A4 or A49

Select Note Octave for normal display mode or Note Number mode.

A multiplier

The default value is 1.0. For the single A5 measurement procedure this would be set to 0.8.

Auto step delay

With a higher value the tuner waits longer to avoid stepping from spurious noise. The range is 1 through 10, a typical value is two. This sets the tuner to change note quickly.

Backlight control

Check the box to have the back light on when the tuner is turned on.

Dwell for Cents buttons

Dwell sets a small delay to the Cents buttons to pause before the incremented is continued.

When ON the Accu-Tuner pauses after the first increment while holding a CENTS button. This gives more time to release the button when making single step cents adjustments. When Off incrementing continues immediately after holding a CENTS button.

Back light intensity

If you would like to adjust the intensity of the backlighting and/or have the backlighting lit whenever tuning with the Accu-Tuner IV. A higher value increases the back light intensity.

Sticky shift

The Accu-Tuner IV can be set so you can press the SHIFT button, then another button and the Accu-Tuner IV will react as if the SHIFT button was held down, like a temporary shift lock. This assumes the second button is pressed within approximately three seconds. With this function turned On, the display will show STICKY ON for three seconds after the SHIFT is actuated, after three seconds STICKY OFF is displayed.

Direction for foot switch

Set the external note switch to step up or down. If Note Change is set to STORE MEMORY it will save corrections to memory then increment the note up or down.

Increment note or save to memory

Normally set to Note Change if checked the external note switch will save new note values to memory then increment to the next note.

Timeout

Timeout is the length of time to wait to shut off the tuner, after the last button is pressed.

Contrast

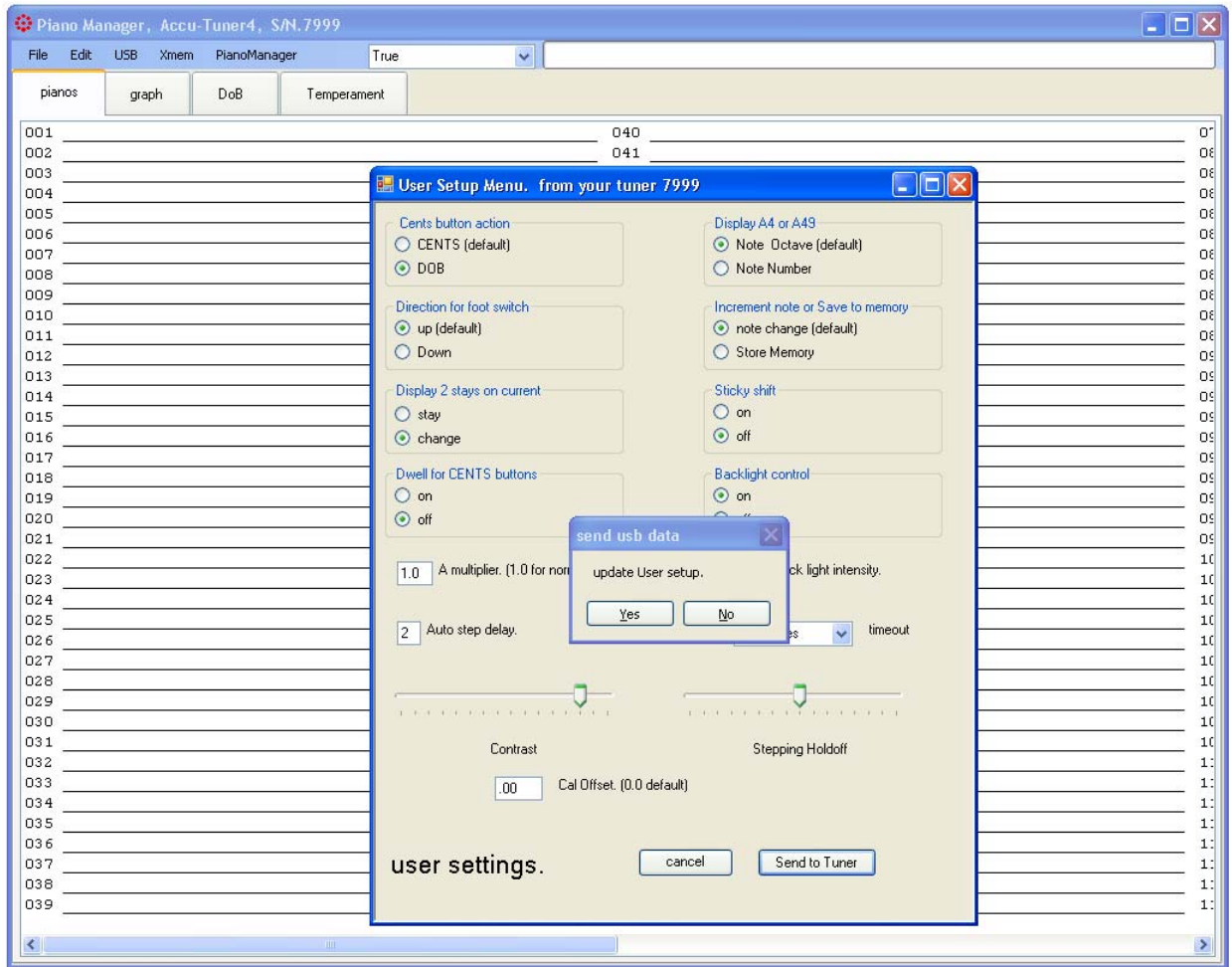
The LCD contrast is adjusted in Cal. Mode using the PAGE buttons. The slider can be preset here but the final setting is done on the Accu-Tuner4.

Stepping hold-off

Dragging the slider left will desensitize the filters auto step signal.

Cal. offset

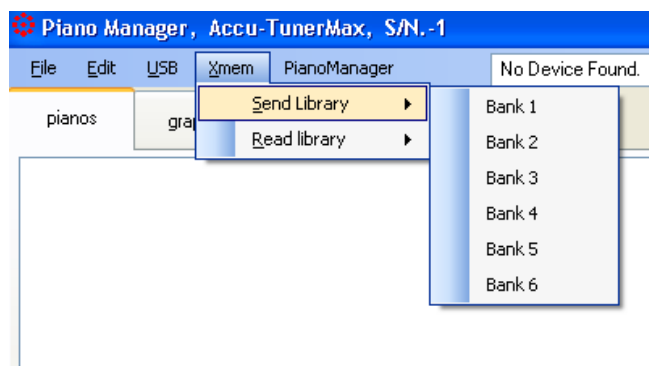
Normally set to 0.0. The allowable range is +- 20.0 cents. A nonzero value will leave the calibration pattern rotating.



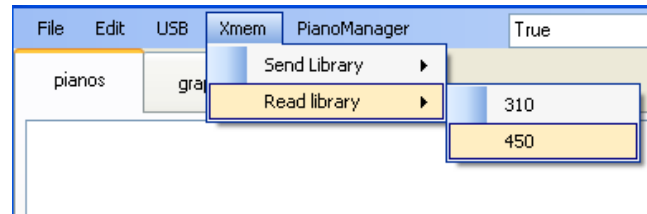
When ready click Send to Tuner, then reassure with a click on Yes.

Xmem

If the tuner has the Max memory setup there are 6 block of 140 piano pages.



The typical SAT4 setup has two blocks that are pages 310 through 449 and 450 through 589.



Send Library

Send 140 piano pages to a section of extra memory. Navigate through the widows dialog to locate .lib files. Library files could be types of pianos or customers that are saved in 140 tuning groups.

Read Library

Read extra memory from an Accutuner4. To save the tunings to a file use the windows dialog or select cancel to display them in the piano tab.

PianoManager

Version

Display the Version of the installed PianoManager program.

Restart Tuner

This restarts the Accu-Tuner4. Unplug the USB cable within two second of clicking then tuner will enter its normal running mode.

TABS

PIANOS

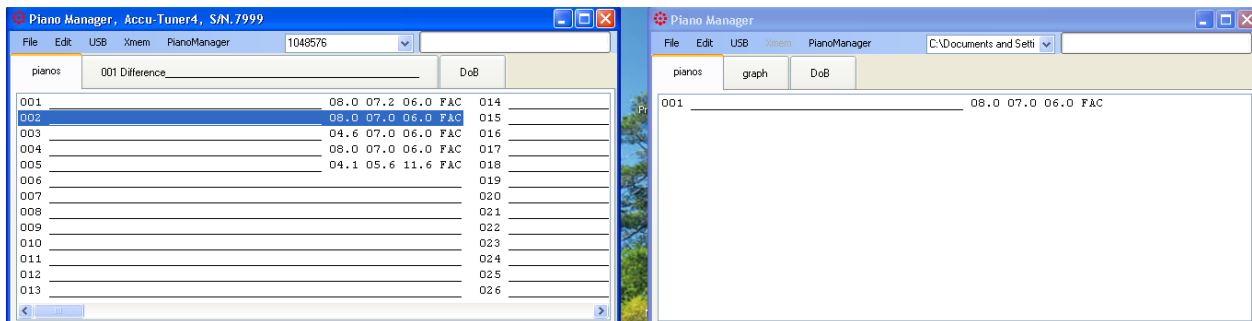
Header Edit

To edit a piano name have the pianos tab selected then use Right click/EditH or two slow clicks to open a header for editing. When the changes are ready press Enter or click a different header to set the header.

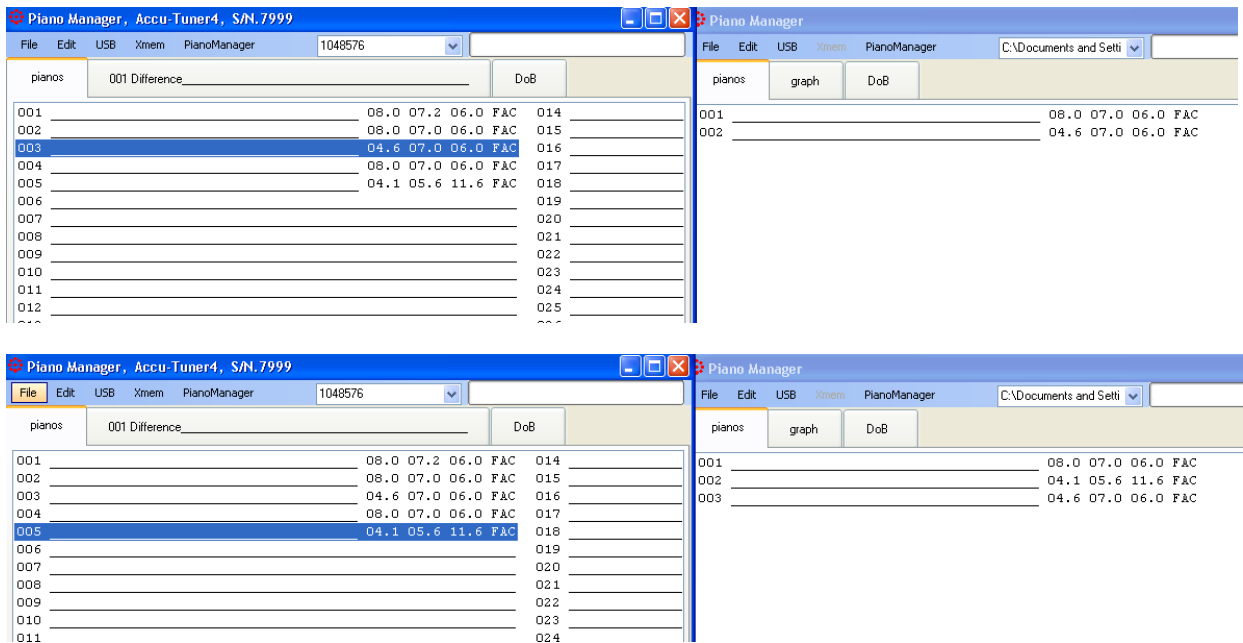
Copy and move

More than one instance of the program is used to arrange tunings prior to sending to the Tuner.

Here a piano from page 2 was copied to a second instance of PianoManager.



Next page 3 was copied then page 5 was inserted between pages one and two.



Or groups of pages can be selected and copied. With the Shift key held a continuous group is selected or the Ctrl key is held and click on individual pianos to select. Then drag and drop the selection to the new location.

Duplicate

Make a selection and drag it off the form then back onto the same form to a drop point. Drop at an insert location or white space at the end of the list. The selected tunings will be copied to the location.

ID	Model Code	Brand	Model Name	Spec 1	Spec 2	Spec 3	Spec 4
001	BW-ACR	BALDWIN	ACROSONIC, 36" SPINET	9.0	7.8	6.2	FAC
002	BW-2000	BALDWIN	MODEL 2000, 42" CONSO	17.2	5.6	4.8	FAC
003	BW-2026	BALDWIN	MODEL 2026, 42" CONSO	17.1	6.3	7.2	FAC
004	BW-2055	BALDWIN	MODEL 2055, 42" CONSO	18.9	5.6	6.4	FAC
005	BW-500	BALDWIN	MODEL 500, 36" SPINET	8.6	9.4	5.1	FAC
006	BW-600	BALDWIN	MODEL 600, 40" CONSOL	18.3	6.1	6.5	FAC
007	BW-6000	BALDWIN	MODEL 6000, 52" UPRIG	5.6	6.8	5.6	FAC
008	BW-743	BALDWIN	MODEL 7435, HAMILTON	17.0	6.9	4.2	FAC
009	BW-ACR	BALDWIN	ACROSONIC, 36" SPINET	9.0	7.8	6.2	FAC
010	BW-D	BALDWIN	D, 9' CONCERT GRAND	8.3	8.0	5.9	FAC
011	BW-F	BALDWIN	F, 7' GRAND	9.6	8.1	9.0	FAC
012	BW-HAM	BALDWIN	HAMILTON, 45" CONSOLE	17.9	6.2	6.0	FAC
013	BW-L	BALDWIN	L, 6' 3" GRAND.	7.9	9.0	8.9	FAC
014	BW-M	BALDWIN	M, 5' 2" GRAND.	13.4	7.7	6.9	FAC
015	BW-R	BALDWIN	R, 5' 8" GRAND	9.3	9.2	7.5	FAC
016	BW-SD10	BALDWIN	SD10, 9' CONCERT GRAN	6.9	7.5	6.7	FAC
017	BW-SF10	BALDWIN	SF10, 7' GRAND	6.1	7.1	8.0	FAC
018	BW-ACR	BALDWIN	ACROSONIC, 36" SPINET	9.0	7.8	6.2	FAC
019	BW-2026	BALDWIN	MODEL 2026, 42" CONSO	17.1	6.3	7.2	FAC
020	BW-600	BALDWIN	MODEL 600, 40" CONSOL	18.3	6.1	6.5	FAC

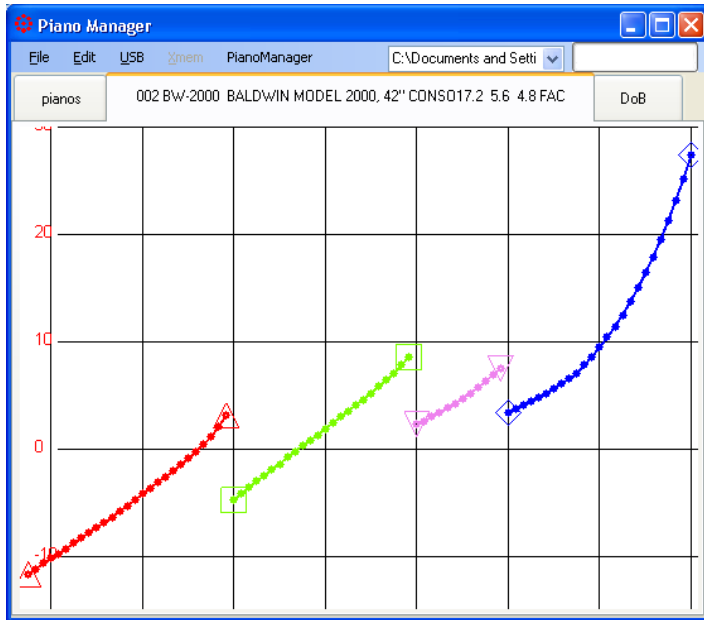
The highlighted pianos were dragged off the form then dropped at the end of the list making a copy of them.

Graph

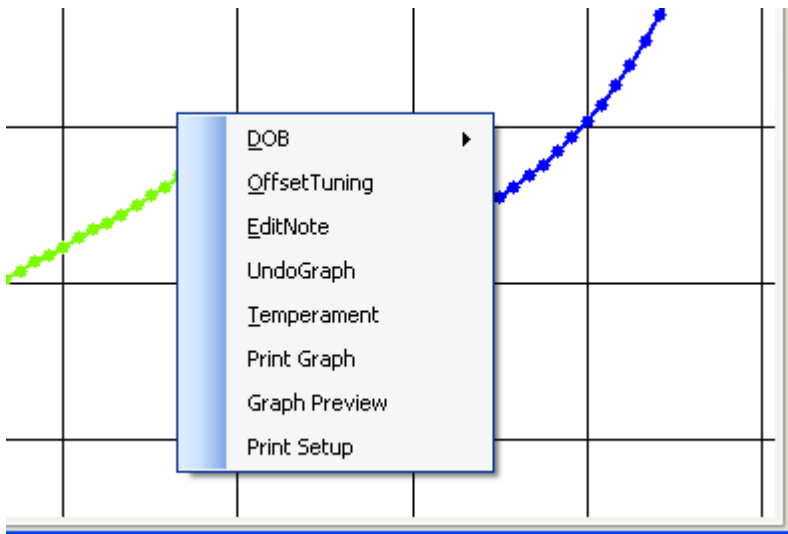
Use the up/down arrows or mouse wheel to change page.

Click on a point to display the properties of a note.

Hold Ctrl and drag it with the mouse.



Right click to activate the context menu.



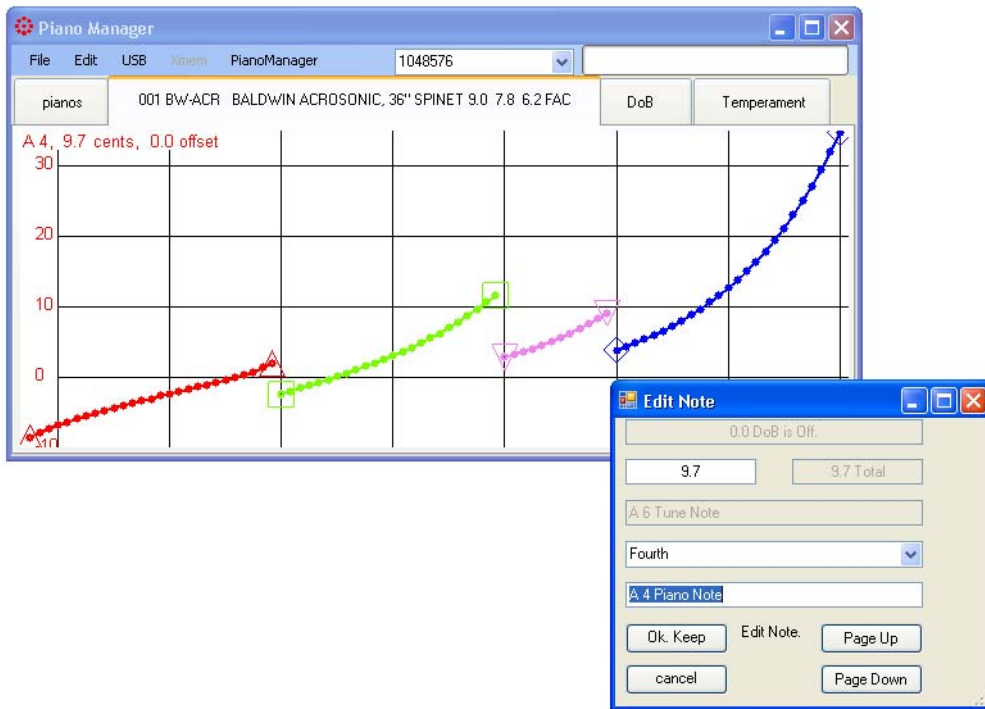
Double click a point to open the Edit Note window.

Click a box then use the mouse wheel to change the setting. Hold Ctrl and use arrows to change notes and cents.

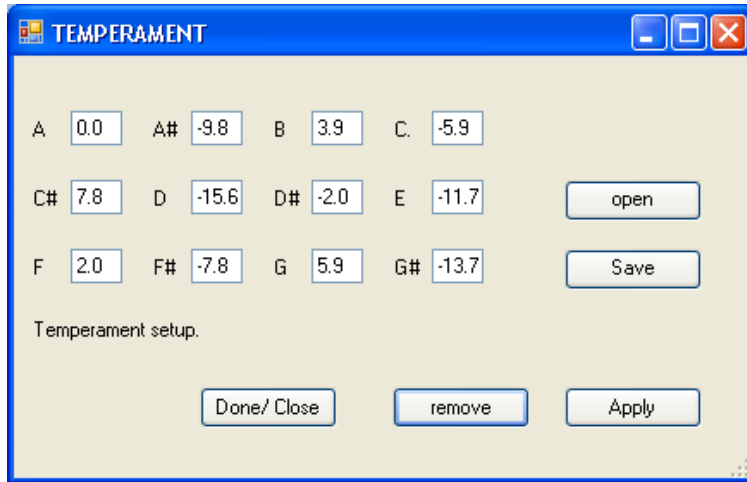
Ctrl and PageUp/PageDown keys will step octaves.

PageUp/PageDown keys alone will change pages.

The graph will show the changes as they are made.



Temperament from context menu



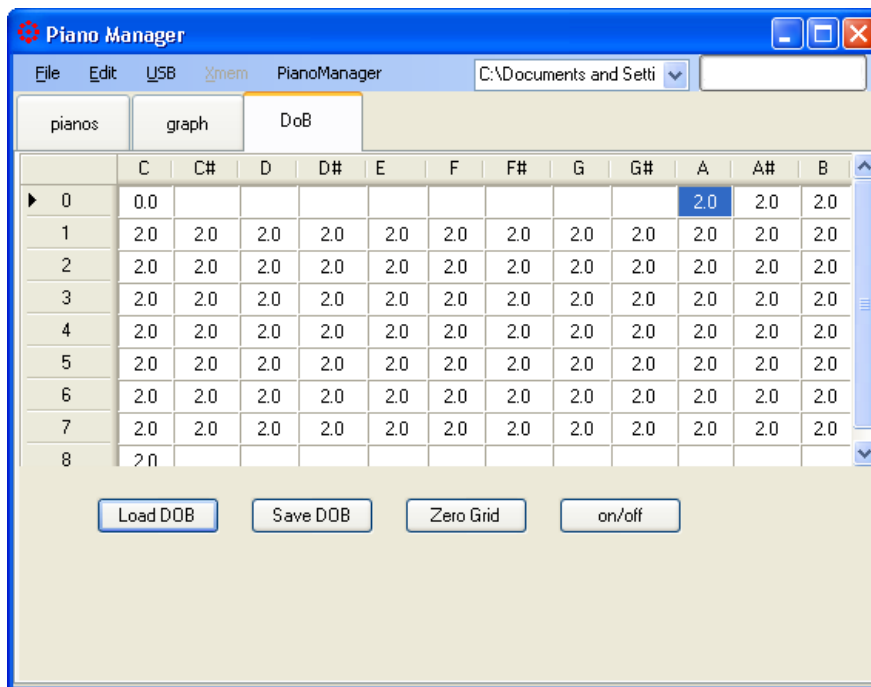
Click Open to load a saved Temperament into the grid. A windows dialog is displayed with Temperament files filtered through. Navigate to the directory where temperaments are saved to make a selection.

Click the button to save a new temperament to a file with *.tmp extension. Use the windows dialog to navigate to the directory where temperament files are saved.

Apply will add this temperament to the graph.

Remove subtracts from the graph

Double octave beat



Load DOB

Click to load a saved DOB into the grid. A windows dialog is displayed with DOB files filtered through. Navigate to the directory where DOBs are saved to make a selection.

Save DOB

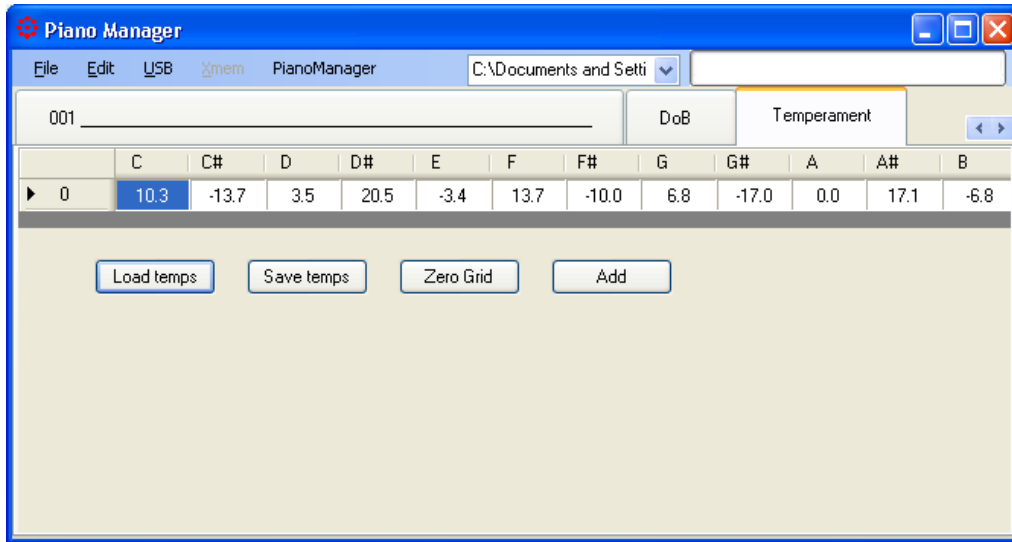
Click the button to save a new DOB to a file with *.dob extension. Use the windows dialog to navigate to the directory where DOB files are saved.

Zero Grid

Click the button to clear all cells to zero cents.

Temperament

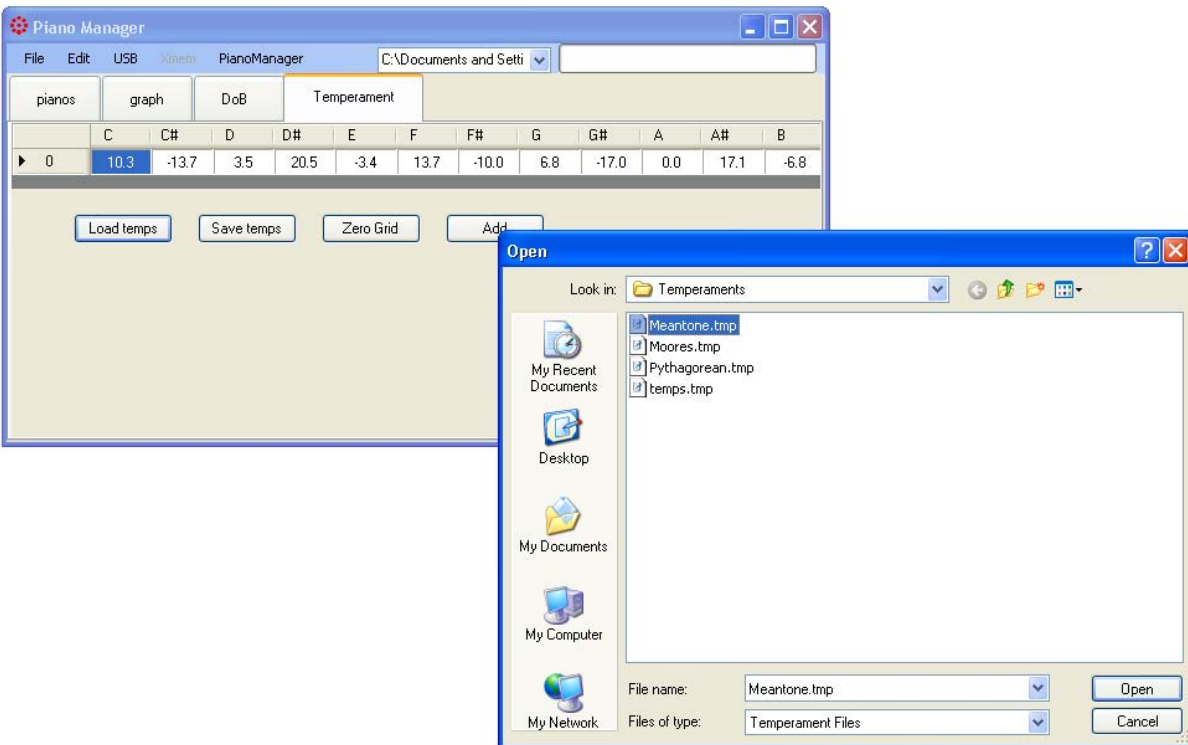
Here is a method of adding a historical temperament to a tuning.



files

through. Navigate to the directory where DOBs are saved to make a selection.

Load
temps
temperament
filtered



Save Temps

Click the button to save a new temperament to a file with *.tmp extension. Use the windows dialog to navigate to the directory where temperament files are saved.

Zero Grid

Click the button to clear all cells off the grid to zero cents.

Add

Add the temperament to the piano loaded on the graph tab.